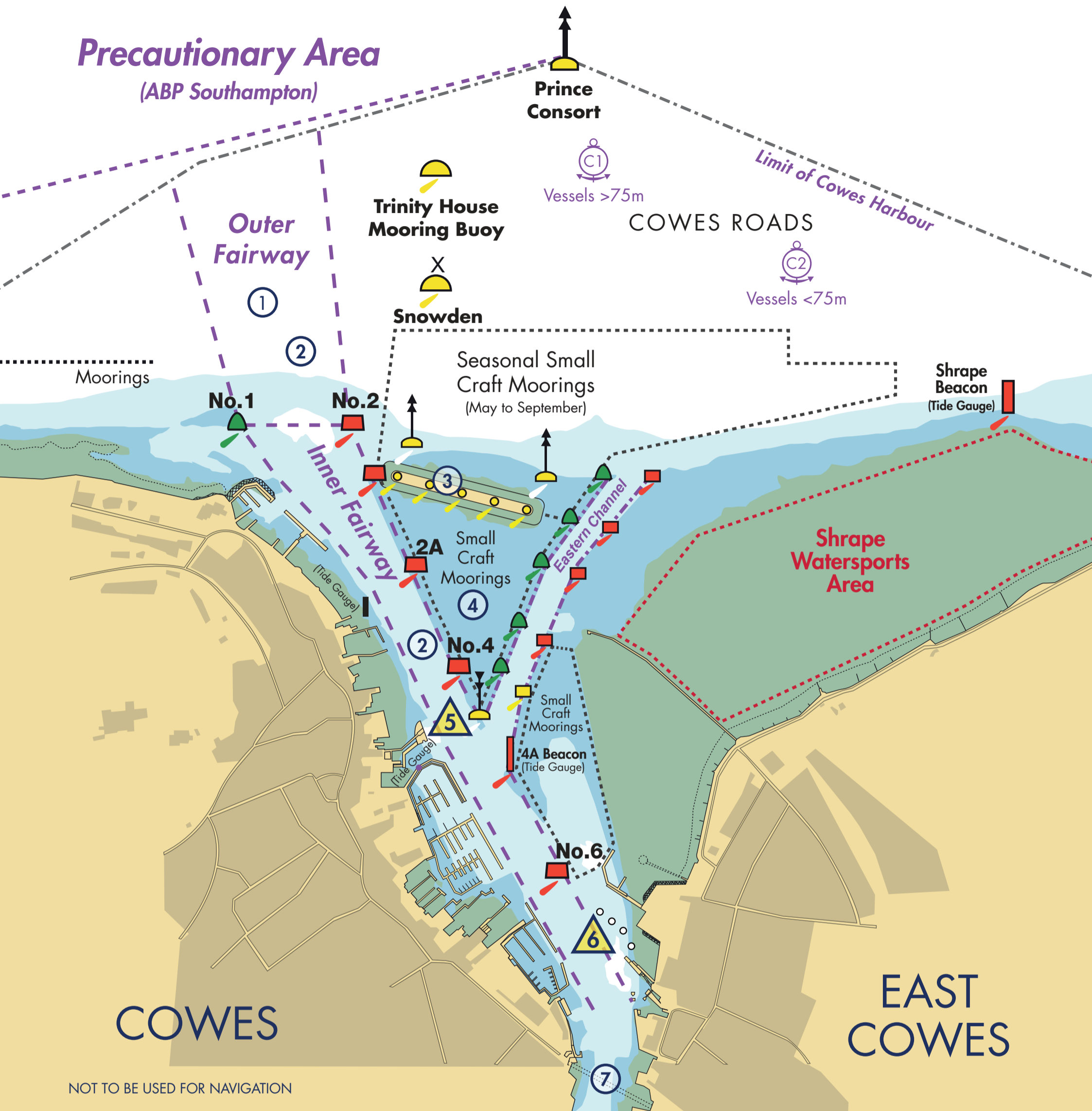


# Precautionary Area

(ABP Southampton)



NOT TO BE USED FOR NAVIGATION

- |   |   |
|---|---|
| <p>① Commercial ships/ferries maintain right of way over sailing vessels and vessels &lt;20m in Outer and Inner Fairways.</p> <p>② Strong tidal flows up to 3 knots.</p> <p>③ Breakwater submerged obstruction extends 25m north and south of lit beacons, and to buoys marking western and eastern ends.</p> <p>④ Beware of cross current up to 2 knots between HW-2.5hrs and HW.</p> <p>⑤ Inner Fairway Precautionary Area - Red Jet Turning and Eastern Channel Traffic Convergence Area:</p> <ul style="list-style-type: none"> <li>• Beware of thrust from turning Red Jets. Do not overtake on starboard side of inbound Red Jets.</li> <li>• Eastern Channel traffic is advised to give way to Inner Fairway traffic.</li> </ul> | <p>⑥ Inner Fairway Precautionary Area - Red Funnel Vehicle and Freight Ferry Berthing Area:</p> <ul style="list-style-type: none"> <li>• Vehicle and freight ferries turn to port at No. 6 buoy and leave the Fairway.</li> <li>• Do not obstruct ferries arriving or departing East Cowes.</li> <li>• Beware of freight ferry frequent manoeuvres between berths at East Cowes terminal.</li> </ul> <p>⑦ Give way to Chain Ferry:</p> <ul style="list-style-type: none"> <li>• Beware strong following tides. Ebb tide can exceed 4 knots.</li> <li>• Clearance depths over chains vary. Check advice in Local Notices to Mariners.</li> </ul> |
|---|---|