



COWES HARBOUR COMMISSION

LOCAL NOTICE TO MARINERS No. 29 of 2020 Eastern Channel

*This Notice replaces Local Notices to Mariners Nos. 28(T) of 2020 and 10 of 2019,
which are hereby cancelled.*

Notice is hereby given that the yellow **EC9** special mark buoy in the Cowes Harbour **Eastern Channel** at position approximate **50° 45.850' N 001° 17.635' W** has been replaced by a **starboard channel mark** in the same position. The new starboard channel mark retains the charted name of **EC9** and has the light characteristic **Fl.G.10s**. See Figure 1.



Figure 1: New EC9 starboard channel mark

The dredged Eastern Channel connects the eastern approaches to Cowes with the Inner Fairway. This enables small vessels up to 20m in length to avoid the busy main harbour entrance when arriving or departing Cowes from/to the north and east, thereby de-conflicting with the larger commercial vessels. See Figure 2.

Vessels in the Eastern Channel must adhere to the harbour speed limit of 6 knots through the water and no wash.

Vessels joining or leaving the Eastern Channel are advised to give way to all vessels navigating in the Inner Fairway.

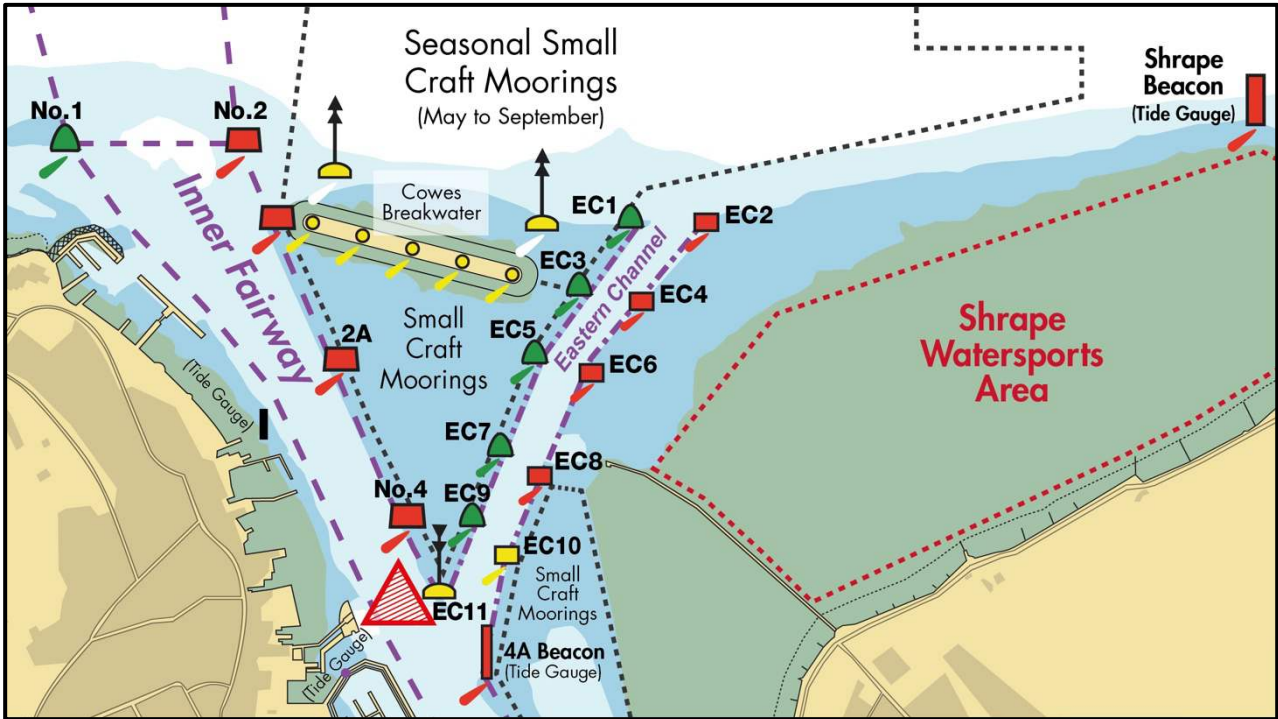


Figure 2: Eastern Channel buoyage.

Red triangle indicates Inner Harbour Precautionary Area: Red Jet Turning & Eastern Channel Traffic Convergence Area

Eastern Channel buoyage, lights and positions:

Station	Colour	Type	Light Characteristic	Lat. (N)	Long. (W)
EC1	Green	Buoy	Fl.G.3s	50° 46.020'	001° 17.465'
EC2	Red	Buoy	Fl.R.3s	50° 46.020'	001° 17.418'
EC3	Green	Buoy	Fl.G.5s	50° 45.985'	001° 17.512'
EC4	Red	Buoy	Fl.R.5s	50° 45.980'	001° 17.478'
EC5	Green	Buoy	Fl.G.2s	50° 45.946'	001° 17.567'
EC6	Red	Buoy	Fl.R.2s	50° 45.936'	001° 17.536'
EC7	Green	Buoy	Fl.G.4s	50° 45.900'	001° 17.600'
EC8	Red	Buoy	Fl.R.4s	50° 45.869'	001° 17.580'
EC9	Green	Float (Stbd)	Fl.G.10s	50° 45.850'	001° 17.635'
EC10	Yellow	Buoy (Port)	Fl.Y.3s	50° 45.798'	001° 17.627'
EC11	Yellow-Black	S. Cardinal Buoy	Q(6) + LFl(1)	50° 45.800'	001° 17.668'
4A Beacon	Red	Pile	LFl.R.5s	50° 45.757'	001° 17.630'

Channel depth/width

The dredged depth in the Eastern Channel is 2.25 metres below chart datum, therefore the minimum depth of water in the channel is equal to the height of tide + 2.25m. Small vessels may use the Eastern Channel provided there is sufficient water in relation to their draught.

Tide gauges are located on the Shrape Beacon and 4A Beacon (see Figure 2).

The channel is, at its narrowest, 35m wide. Mariners are advised that shallow water lays either side of the channel until passing north of the Cowes Breakwater.

Red Jet Turning & Eastern Channel Traffic Convergence Area

Mariners attention is brought to the Inner Fairway Precautionary Area located at the western end of the Eastern Channel (see Figure 2). This area is used by the Red Jet High Speed passenger ferry for executing a 180° turn prior to berthing alongside Jubilee Pontoon at Cowes Town Quay. Significant wash is generated at the stern of the ferry during this manoeuvre. Vessels using the Eastern Channel will be merging into or diverging out of the Inner Fairway in this area. Eastern Channel traffic is advised to give way to Inner Fairway traffic.

Rule 9

Mariners must ensure that Rule 9 of the Collision Regulations is complied with. Particular care should be taken to avoid impeding commercial vessels in the Inner Fairway, this includes passenger ferries (Red Jets) turning off Cowes Town Quay and large vehicle and freight ferries approaching and departing from East Cowes Red Funnel Terminal.

Cross current

A west-southwesterly current, of up to 2kts during spring tides, may be experienced between HW-2.5hrs and HW, west of the Shrape Breakwater.

A northwesterly current, of up to 1.5kts during spring tides, may be experienced from HW +3hrs to HW +5hrs, west of the Shrape Breakwater.

Caution should be exercised so as to not be set into the path of other vessels using the Eastern Channel or vessels navigating in the Inner Fairway.

Small craft moorings

Care should be taken to adhere to the buoyed channel and not to enter the 'small craft moorings' (see Figure 2); these are prohibited areas.

Shrape Watersports Area

The area to the east of the Shrape breakwater has been designated a watersports area and vessels not using the area should ensure they remain well clear.

Capt. Stuart McIntosh

Harbour Master, Harbour Office, Town Quay, Cowes, Isle of Wight, PO31 7AS

Email: chc@cowes.co.uk Website: www.cowesharbourcommission.co.uk

17th August 2020

Owners, Agents, Charterers, Marinas, Yacht Clubs and Recreational Sailing Organisations should ensure that the contents of this Notice are made known to the masters or persons in charge of their vessels or craft.