



COWES HARBOUR COMMISSION

LOCAL NOTICE TO MARINERS No. 04 of 2025 Eastern Channel

(This Notices replaces Local Notices to Mariners 29 of 2020 which is hereby cancelled.)

Notice is hereby given that all mariners should be aware of the following safety information when navigating within the vicinity of the Eastern Channel.

The dredged Eastern Channel connects the eastern approaches to Cowes with the Inner Fairway. This enables small vessels up to 20m in length to avoid the busy main harbour entrance when arriving or departing Cowes from/to the north and east, and thereby de-conflicting with the larger commercial vessels. See Figure 2.

Vessels in the Eastern Channel must adhere to the harbour speed limit of 6 knots through the water and no wash.

Vessels joining or leaving the Eastern Channel are advised to give way to all vessels navigating in the Inner Fairway.

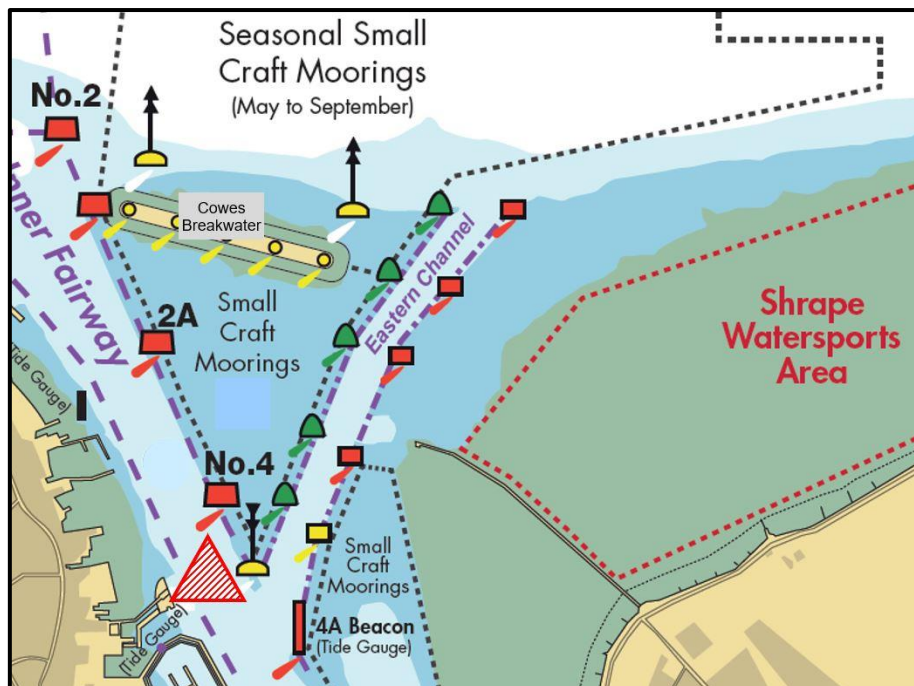


Fig. 1: Eastern Channel Buoyage

Lights and positions:

Station	Colour	Type	Light Characteristic	Lat. (N)	Long. (W)
EC1	Green	Buoy	Fl.G.3s	50° 46.020'	001° 17.465'
EC2	Red	Buoy	Fl.R.3s	50° 46.020'	001° 17.418'
EC3	Green	Buoy	Fl.G.5s	50° 45.985'	001° 17.512'
EC4	Red	Buoy	Fl.R.5s	50° 45.980'	001° 17.478'
EC5	Green	Buoy	Fl.G.2s	50° 45.946'	001° 17.567'
EC6	Red	Buoy	Fl.R.2s	50° 45.936'	001° 17.536'
EC7	Green	Buoy	Fl.G.4s	50° 45.900'	001° 17.600'
EC8	Red	Buoy	Fl.R.4s	50° 45.869'	001° 17.580'
EC9	Green	Float (Stbd)	Fl.G.10s	50° 45.850'	001° 17.635'
EC10	Yellow	Buoy (Port)	Fl.Y.3s	50° 45.798'	001° 17.627'
EC11	Yellow-Black	S. Cardinal Buoy	Q(6) + LFl(1)	50° 45.800'	001° 17.668'
4A Beacon	Red	Pile	LFl.R.5s	50° 45.757'	001° 17.630'

Navigational Safety:

- Small vessels, up to 20m in length, approaching from or departing to the north or east may use the Eastern Channel.
- The dredged depth in the Eastern Channel is 2.25 metres below chart datum; therefore the minimum depth of water in the channel is equal to the height of tide + 2.25m.
- Tide gauges are on the Shrape Beacon and 4A Beacon (see Figure 1).
- The channel is, at its narrowest, 35m wide.
- Vessels using the Eastern Channel are to adhere to the harbour speed limit of 6kts through the water and no wash.
- Mariners attention is brought to the Inner Fairway Precautionary Area which is located at the western end of the Eastern Channel (see the red triangle on Figure 2). This area is used by the Red Jet High Speed passenger for executing a 180° turn prior to berthing alongside Jubilee Pontoon at Town Quay in Cowes. Significant wash is generated at the stern of the ferry during this manoeuvre. Additionally, craft using the Eastern Channel will be merging into or diverging out of the main channel in this area. Vessels joining or leaving the Eastern Channel are advised to give way to all vessels navigating in the Inner Fairway.
- Mariners must ensure that Rule 9 of the Collision Regulations is complied with. Particular care should be taken to avoid impeding commercial vessels in the Inner Fairway, this includes passenger ferries (Red Jets) turning off Cowes Town Quay and large vehicle and freight ferries approaching and departing from East Cowes Red Funnel Terminal.
- A west-south-westerly current, of up to 2kts during spring tides, may be experienced between HW-2.5hrs and HW, west of the Shrape Breakwater; and
- A north-westerly current, of up to 1.5kts during spring tides, may be experienced from HW +3hrs to HW +5hrs, west of the Shrape Breakwater. Caution should be exercised so as to not be set into the path of other vessels using the Eastern Channel or vessels navigating in the Inner Fairway.
- Care should be taken to adhere to the buoyed channel and not to enter the 'small craft moorings' (see Figure 1), these are prohibited areas.
- The area to the east of the Shrape breakwater has been designated a watersports area and craft not using the area should ensure they remain well clear.

This Local Notice to Mariners shall remain in force until further notice.

Jon Kidd

Harbour Master, Harbour Office, Town Quay, Cowes, Isle of Wight, PO31 7AS
Email: chc@cowes.co.uk Website: www.cowes.co.uk

2 January 2025

Owners, Agents, Charterers, Marinas, Yacht Clubs and Recreational Sailing Organisations should ensure that the contents of this Notice are made known to the masters or persons in charge of their vessels or craft.